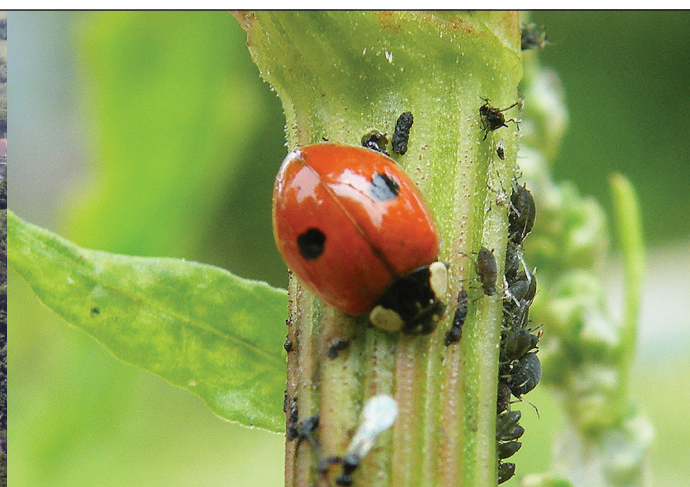


# WIGHT STUDIES

**PROCEEDINGS  
OF THE  
ISLE OF WIGHT NATURAL HISTORY  
AND ARCHAEOLOGICAL SOCIETY**



# ISLE OF WIGHT NATURAL HISTORY AND ARCHAEOLOGICAL SOCIETY

**Address:** Unit 16, Prospect Business Centre, Cowes, Isle of Wight, PO31 7AD  
Tel: 01983 282596      Email: [iwnhas@btconnect.com](mailto:iwnhas@btconnect.com)      Website: [www.iwnhas.org](http://www.iwnhas.org)

## Officers for 2022

President	Matthew Chatfield
Treasurer	Nigel Locke
General Secretary	Dr Colin Pope 14 High Park Road Ryde, IW PO33 1BP
Membership Secretary	Mrs Toni Goodley

The Society was founded in 1919. Its activities include the study and conservation of the flora, fauna, archaeology and geology of the Isle of Wight. General and section meetings, lectures and excursions are arranged throughout the year and advertised on the Society's website. Proceedings and a Bird Report are published annually; Bulletins and Programmes twice a year. A periodic electronic communication is available on request. All these publications are issued without further charge to members.

## Subscriptions

Ordinary Membership	£20
Family Membership	£25
Full Time Student Membership	£10

(Application forms and other information are obtainable from the General Secretary or Society website)

## Cover photographs

### Top left:

Godshill Church viewed from Gat Cliff.

Photo: Keith Marston

### Top right:

Two-spot ladybird (*Adalia bipunctata*), the *iWatchWildlife* species of the year 2022.

Photo: Marion Wager

### Bottom left:

Male stag beetle (*Lucanus cervus*), the largest beetle in Britain, is unmistakable with its huge antler-like jaws and reddish-brown body. This specimen was photographed in Yarmouth.

Photo: Rachel McCraith

### Bottom right:

Fossil sea-urchin identified as *Prionocidaris vendocinensis* (Agassiz and Desor), White Chalk Group, Upper Turonian to Lower Santonian, Upper Cretaceous. It was found in a flint cobble at Bembridge Ledges by Richard Temple in 2017.

Photo: Keith Marston



## Contents

<b>Editorial</b>	...	<b>4</b>
<b>Paul Bingham and Tony Tutton:</b>		
	The National Trust on the Isle of Wight: The Inter-War Years - People and Places	<b>5</b>
<b>Peter Burgess:</b>	Long-Term Observation of Glow-Worm <i>Lampyrus noctiluca</i> Population Trends in a Domestic Garden Environment	<b>16</b>
<b>Ben Carpenter:</b>	Distribution, Abundance and Host Tree Species of Mistletoe <i>Viscum album</i> L. (Viscaceae) on the Isle of Wight	<b>22</b>
<b>Roger J.H. Herbert, Jenny Mallinson and Ken Collins:</b>		
	The Mantis Shrimp <i>Rissoides desmaresti</i> in the Solent and around the Isle of Wight	<b>32</b>
<b>Alex Peaker:</b>	Four New Dinosaurs Named from the Isle of Wight	<b>43</b>
<b>Martin C. Munt:</b>	Upper Cretaceous <i>Pinna</i> and <i>Belemnitella</i> with Associated Endolithic Sponge Crypts and Polychaete Tunnels Preserved in Flint from the Isle of Wight	<b>49</b>
<b>David Tomalin and Kevin Trott:</b>	When Godshill Church Went Down-Hill	<b>53</b>
<b>Colin R. Pope:</b>	Flowering Plants and Ferns, 2021	<b>72</b>
<b>Colin R. Pope and Jackie Hart:</b>	New and Interesting Fungi in 2021	<b>77</b>
<b>Colin R. Pope:</b>	Bats (Chiroptera), 2021	<b>81</b>
<b>Jim R. Baldwin:</b>	Odonata, Isle of Wight, 2021	<b>83</b>
<b>Richard Grogan:</b>	Mammal Report, Isle of Wight, 2017–2021	<b>86</b>
<b>Clive Cooper:</b>	Meteorological Report for Shanklin, Isle of Wight for the Year 2021	<b>89</b>
<b>John Matthews:</b>	A Victorian Scholar – The Rev. Edward Boucher James	<b>92</b>
<b>Mike Cotterill:</b>	Book Review	<b>96</b>
<b>Obituary</b>	Robert Edney	<b>98</b>
<b>Obituary</b>	Margaret Burnhill	<b>99</b>
<b>Obituary</b>	Maureen Whitaker	<b>101</b>
<b>Publications about the Isle of Wight that have recently appeared</b>		<b>102</b>
<b>Wight Studies:</b>	Notes for the Guidance of Authors	<b>104</b>